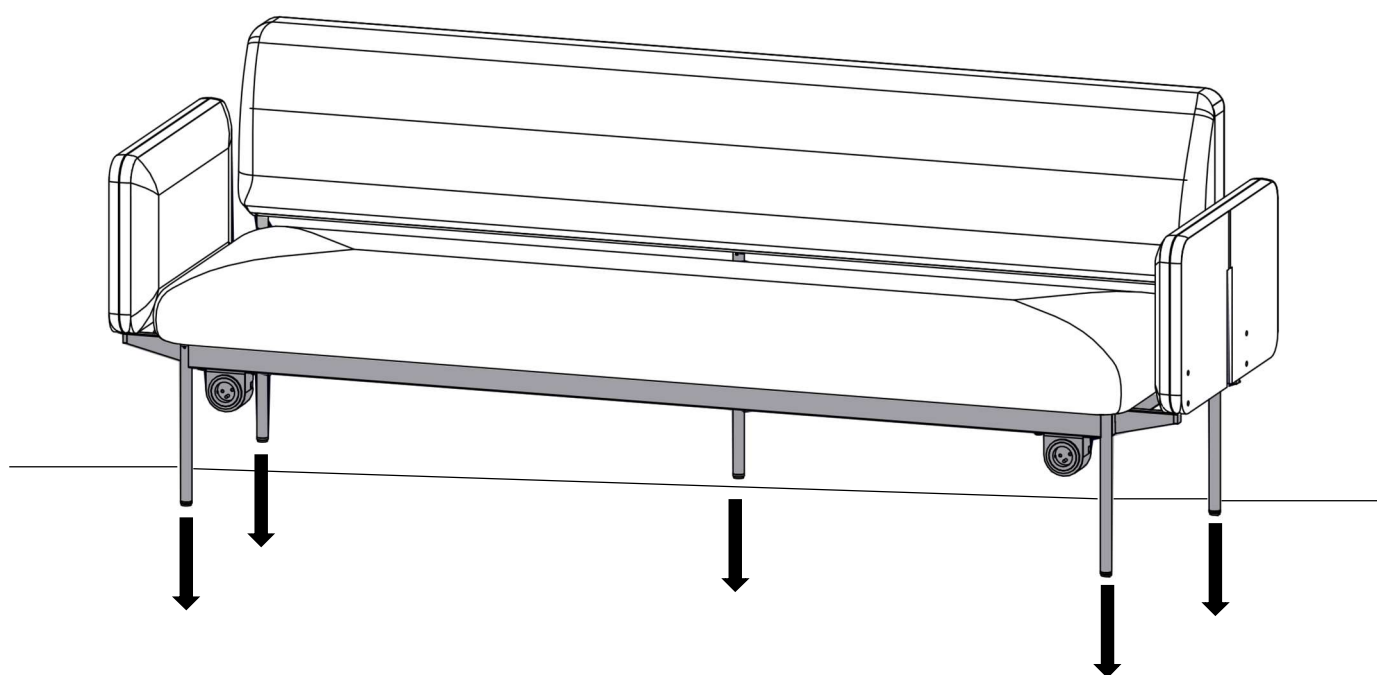


fora_care

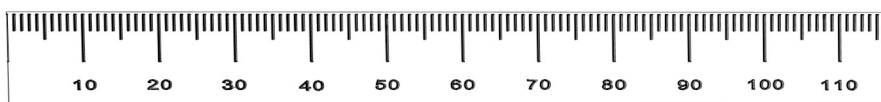
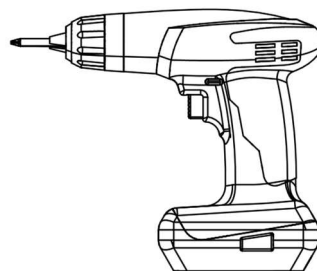
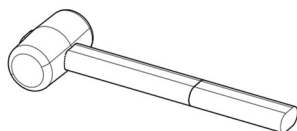
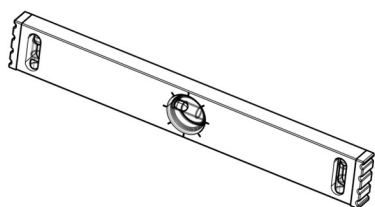
Montaż sofy do podłogi / Mounting the sofa to
the floor / Befestigung des Sofas auf dem
Boden



people / montażysta / personen



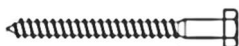
additional tools / dodatkowe narzędzia /
zusätzliche Werkzeuge



attachment / dodatki / anhang



1



*

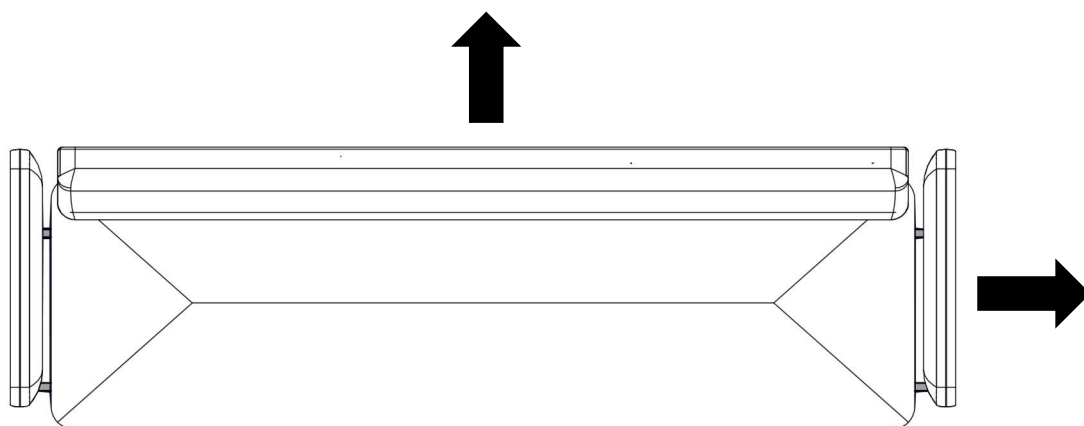
2



* - dobór i zakup kołków po stronie klienta / selection and
purchase of pins on the customer's side / Auswahl und Kauf von
Dübeln auf der Seite des Kunden

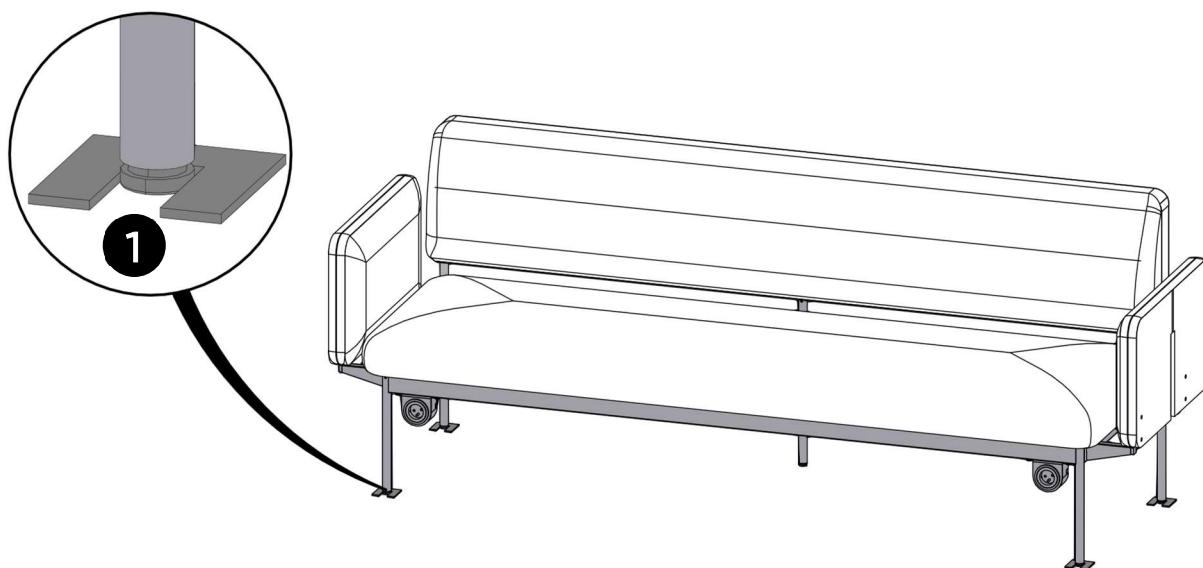
1

Ustalić docelowe położenie sofy / Determine the target location of the sofa / Bestimmen Sie die Zielposition des Sofas

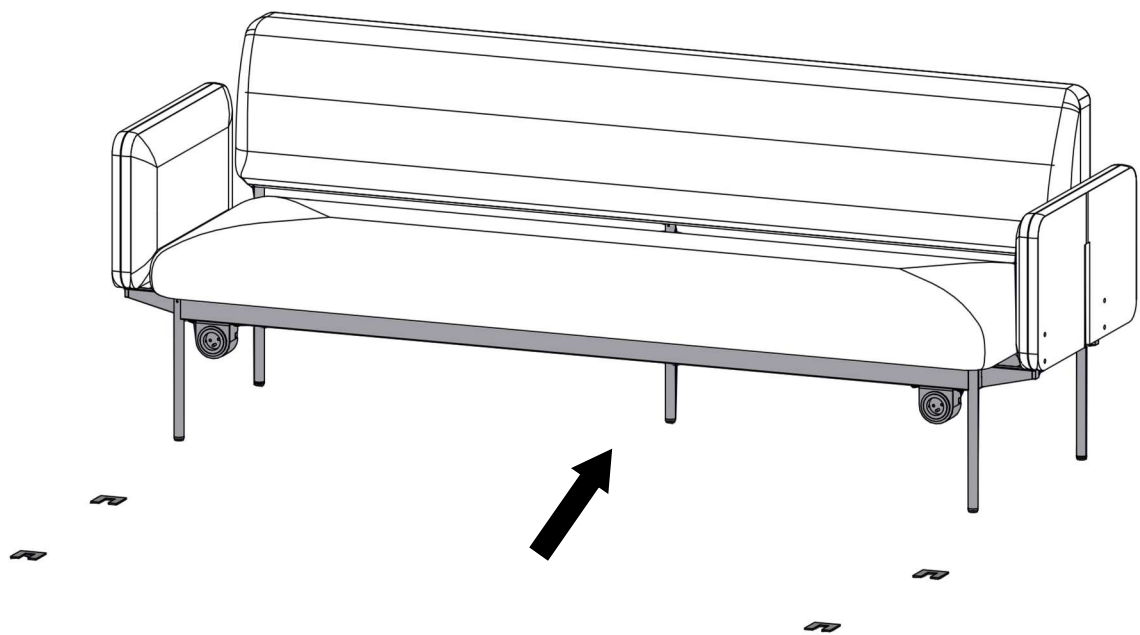


2

Przykleić filce ustalające / Glue the locating felts / Kleben der Befestigungsfilze

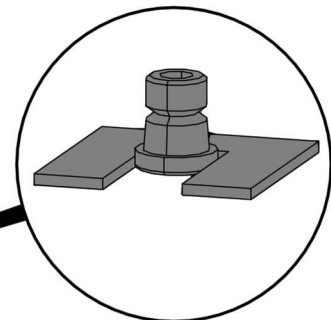
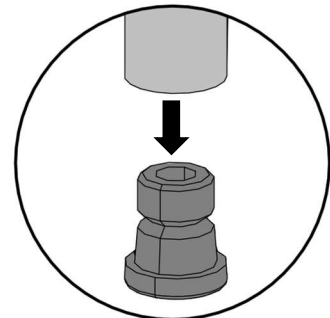
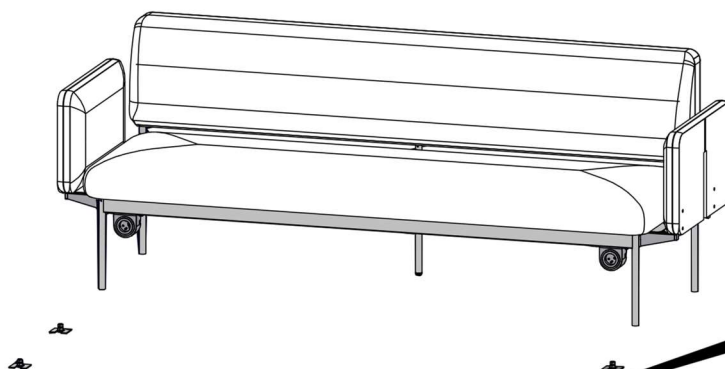


Zdjąć konstrukcję / Remove the structure / Entfernen Sie die Struktur



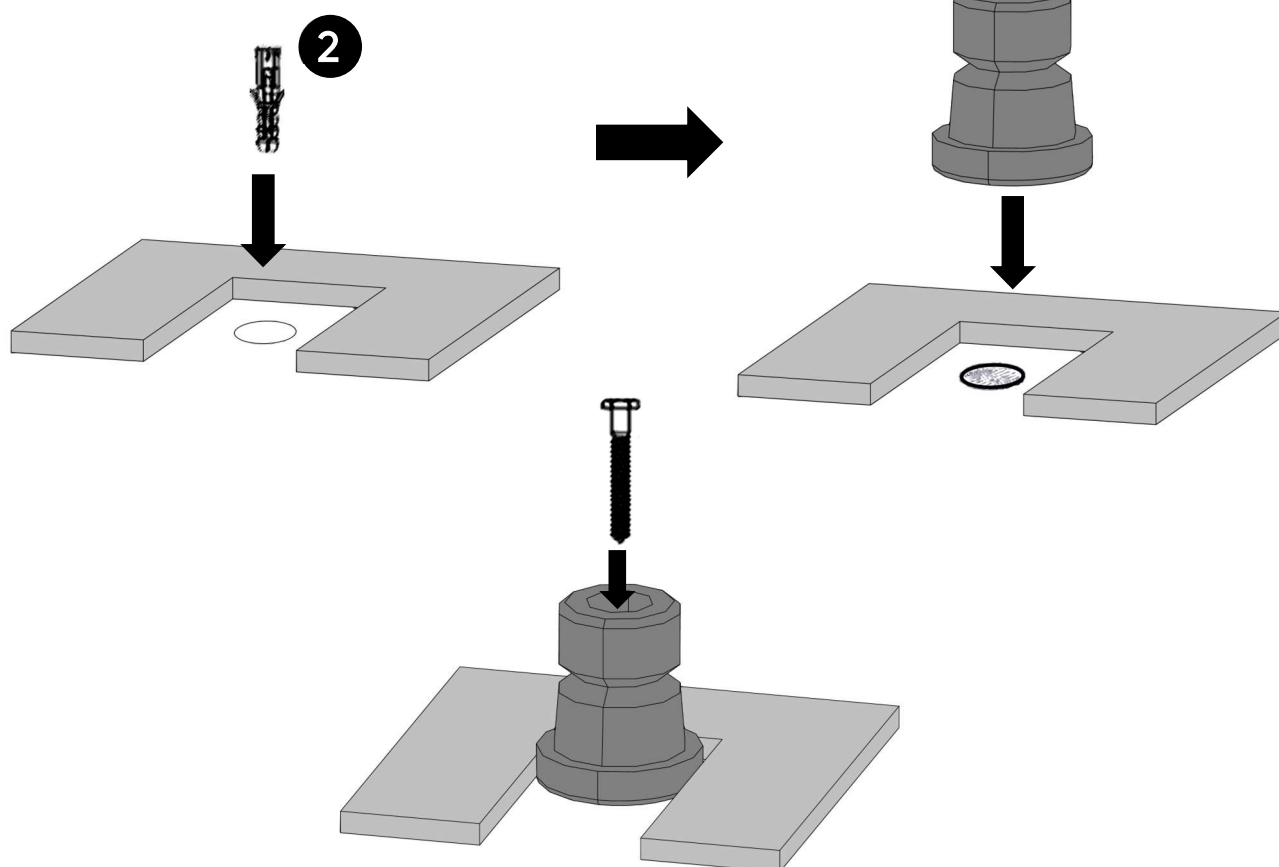
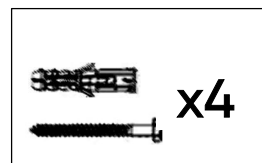
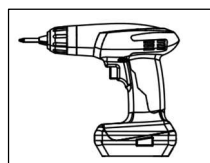
3

Otworowanie podłoża / Punching the substrate / Bodenöffnung Füße



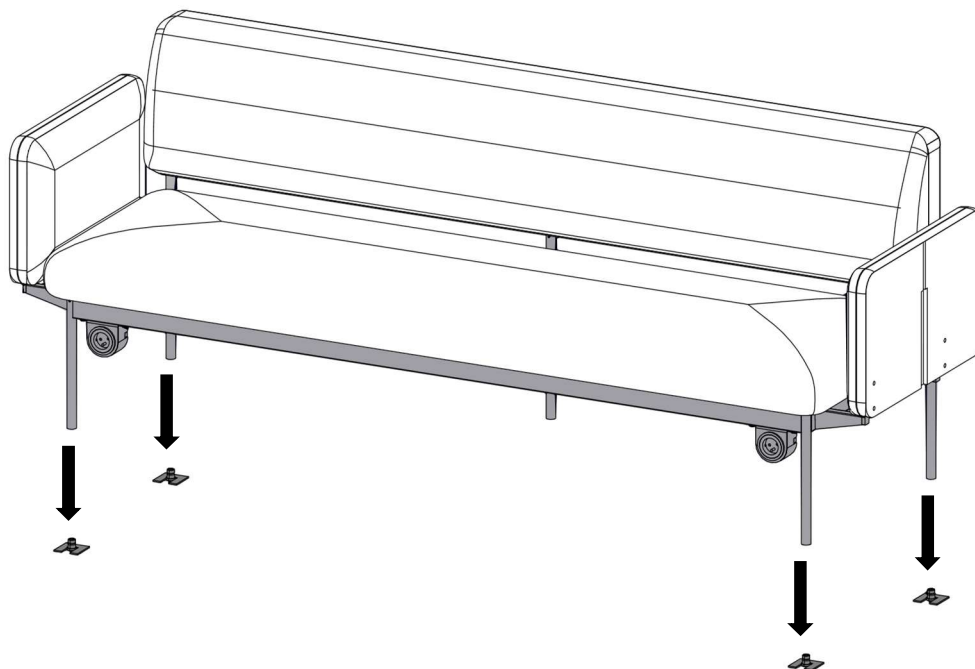
4

Montaż stopki do podłoża / Mounting
the foot to the ground / Befestigung des
Fußes auf dem Boden



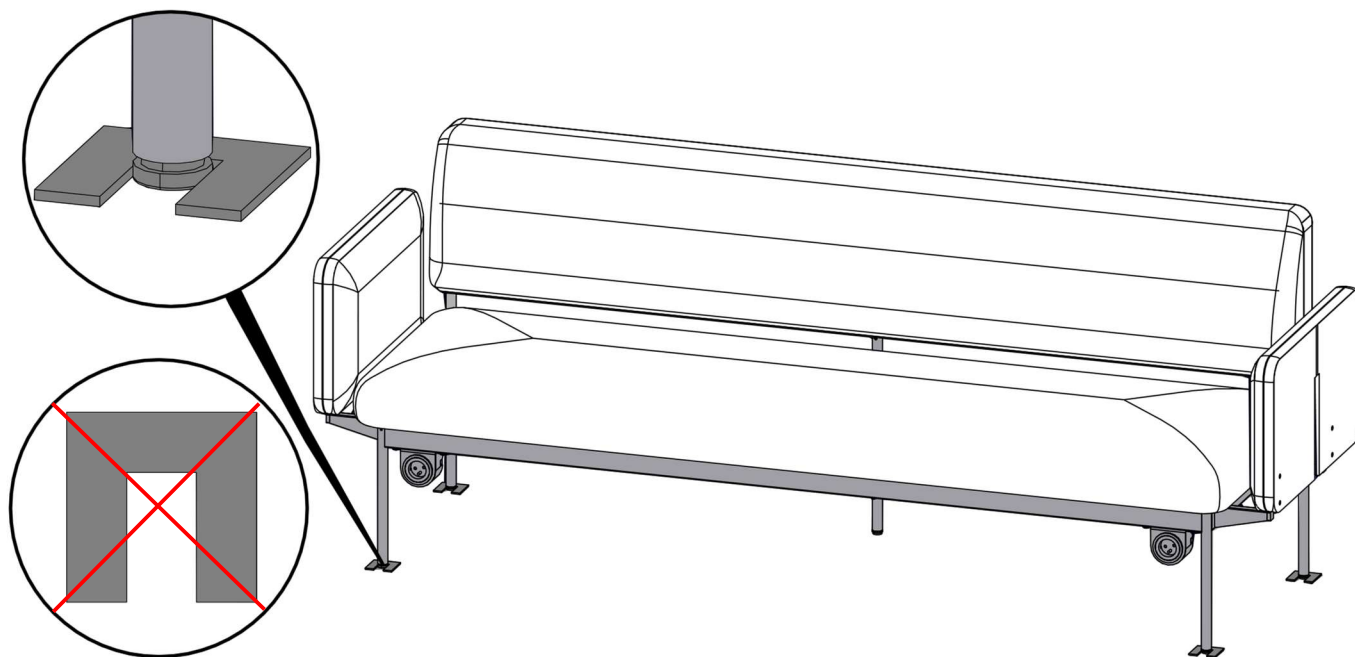
5

Nałożenie konstrukcji na stopki / Applying the structure to the feet
/ Platzierung der Struktur auf den Füßen



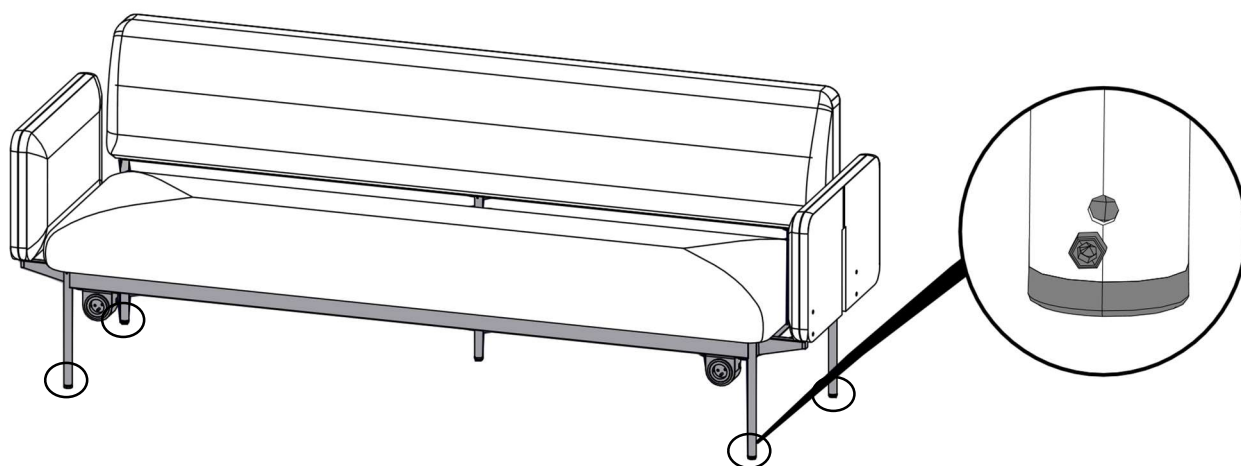
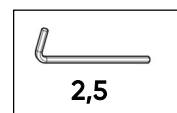
6

Usunięcie pozycjonerów/filców / Removal of positioners/filters /
Entfernung von Stellungsreglern/Folien

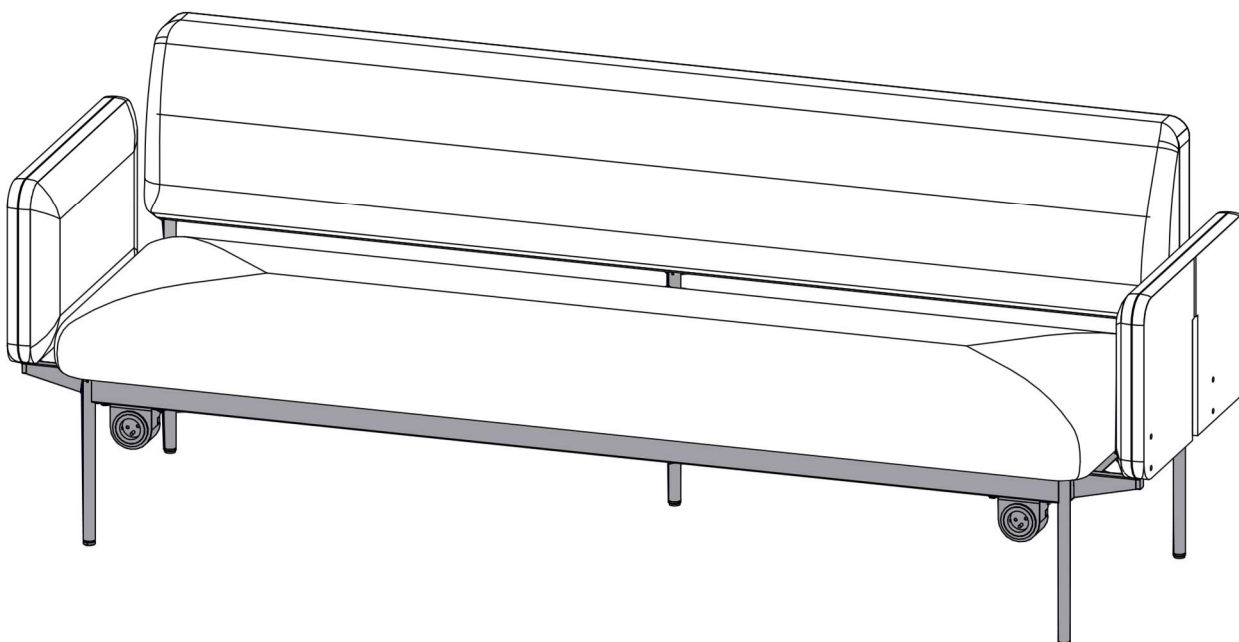


7

Blokada konstrukcji / Structure lock / Strukturschloss



8



Bejot Sp. z o. o.

ul. Wybickiego 2A, Manieczki, 63-112 Brodnica n. Poznania, POLAND

tel.: +48 (61) 281 22 25, e-mail: biuro@bejot.eu

www.bejot.eu

edition 02/2025